



Hosanna Praise
Instrumental Series

341.

*Let Jesus Come
into Your Heart*
讓主耶穌進入你心

for Flute and Piano

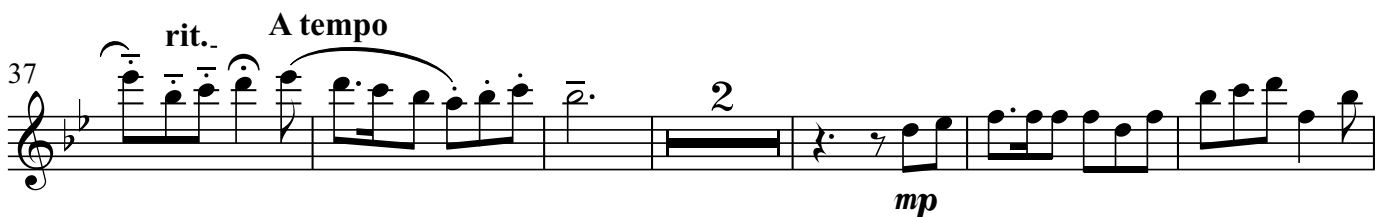
341. Let Jesus Come into Your Heart

for Flute

Leila N. Morris

arr. Andrew Hsu

♩. = 56



56 *rit.* *A tempo* *mp* *mf* 2

62 *f*

67

73 *rit.* *Allargando* *mf* *mp*

Detailed description: This musical score is for a single melodic line in B-flat major, spanning measures 56 to 73. The notation is on a single staff with a treble clef. Measure 56 begins with a half note B-flat, followed by quarter notes C, D, E, and F, then a half note G. A 'rit.' (ritardando) marking is above the first four notes, and 'A tempo' is above the fifth. The dynamic is *mp*. Measure 57 continues with quarter notes G, A, B-flat, and C, followed by a half note D. Measure 58 has a half note E, a quarter note F, and a half note G. Measure 59 is a whole rest. Measure 60 has a whole note B-flat. Measure 61 has a whole note C. Measure 62 begins with a half note D, followed by quarter notes E, F, G, and A, then a half note B-flat. The dynamic is *f*. Measure 63 continues with quarter notes C, D, E, and F, followed by a half note G. Measure 64 has a half note A, a quarter note B-flat, and a half note C. Measure 65 has a half note D, a quarter note E, and a half note F. Measure 66 has a half note G, a quarter note A, and a half note B-flat. Measure 67 begins with a half note C, followed by quarter notes D, E, and F, then a half note G. Measure 68 has a half note A, a quarter note B-flat, and a half note C. Measure 69 has a half note D, a quarter note E, and a half note F. Measure 70 has a half note G, a quarter note A, and a half note B-flat. Measure 71 has a half note C, a quarter note D, and a half note E. Measure 72 has a half note F, a quarter note G, and a half note A. Measure 73 has a half note B-flat, a quarter note C, and a half note D. The dynamic is *mp*. There is a 'rit.' marking above measures 71 and 72, and an 'Allargando' marking above measure 73. A crescendo hairpin is located between measures 72 and 73.

341. Let Jesus Come into Your Heart

讓主耶穌進入你心

Leila N. Morris
arr. Andrew Hsu

♩. = 56

mp

p

mp

6

11

16 *rit.* *A tempo*

21 *mf*

26

31

36

rit. A tempo

36

37

38

39

40

41

mp

41

42

43

44

45

46

mf

46

47

48

49

50

51

51

52

53

54

55

56 *rit.* **A tempo**

mp *mf*

61

mf

65

f *f*

69

73

rit. **Allargando**

mf *mp* *mp*